

# Research to improve the harvesting of forest biomass from mountain areas in Italy

Raffaele Spinelli  
CNR – Ivalsa  
Italy



# CNR-IVALSA

- Public Research Organization
- Research, Development, Transfer

- IVALSA



- Forest Engineering since 1970

# Forests in Italy

- ca.  $10 * 10^6$  ha
- 35 % National territory
- > 2/3 Mountain areas
- 1 bill.  $m^3$  growing stock
- 9 mill.  $m^3$  harvest



# Silviculture

- 70 % hardwood – beech & oaks
- Coppice
- 30 % conifer - spruce, fir, pine
- Close-to-nature –natural regeneration
- No large ( $> 1$  ha) clearcuts
- Selection, shelterwood etc.
- ca. 60% NIPF



# Price

Timber = 80 to 120 US\$/m<sup>3</sup> at landing

Firewood = 70 to 90 US\$/m<sup>3</sup> at landing

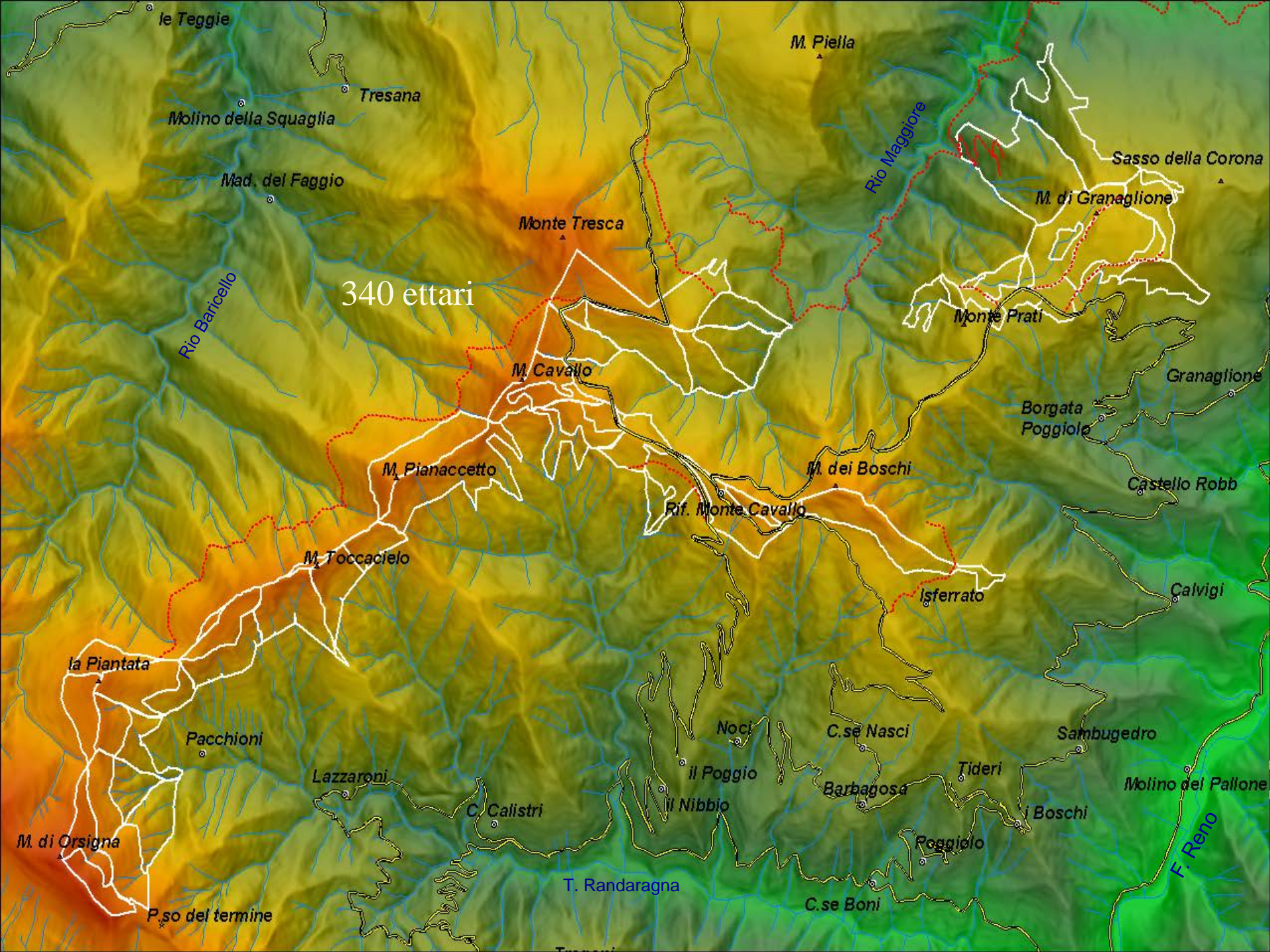
Pulpwood = 30 to 45 US\$/m<sup>3</sup> at landing

Chips = 55 to 85 US\$/m<sup>3</sup> delivered

Labor = 12 to 25 US\$/h

Diesel = 8.5 US\$/gallon





340 ettari

# Landings



# Steep terrain CTL?





# Yarder + Processor!



# Managing the residue

- Loose transport (☹️ payload)
- Chipping (☹️ space)
- Bundling (☹️ cost)



# Does bundling pay?



Balancing the cost of bundling: scenario analysis

Scenario	1	2	3	4	5	6	7	8
Bundler Productivity	Average (3.4 ODT SMH <sup>-1</sup> )				Max. (4.4 ODT SMH <sup>-1</sup> )			
Bundles on road train	No	No	Yes	Yes	No	No	Yes	Yes
Storage cost = cost of roof	No	Yes	No	Yes	No	Yes	No	Yes
Bundling (€ODT <sup>-1</sup> )	31.4	31.4	31.4	31.4	24.2	24.2	24.2	24.2
Saving on transport (€ODT <sup>-1</sup> )*	1.0	1.0	8.0	8.0	1.0	1.0	8.0	8.0
Saving on storage (€ODT <sup>-1</sup> )	12.1	3.8	12.1	3.8	12.1	3.8	12.1	3.8
Saving on comminution (€ODT <sup>-1</sup> )	16.4	16.4	16.4	16.4	16.4	16.4	16.4	16.4
Balance (€ODT <sup>-1</sup> )	1.8	10.2	<b>-5.1</b>	3.2	<b>-5.3</b>	3.1	<b>-12.3</b>	<b>-3.9</b>
% bundling cost covered	94	67	<b>116</b>	90	<b>122</b>	87	<b>151</b>	<b>116</b>

Notes: \* calculated for an assumed one-way transportation distance of 35 km

# Chipper trucks



# Long-range full-suspension



# Storage



## Descriptive Statistics

Split By: TIPO

	Mean	Std. Dev.	Std. Error	Count	Minimum	Maximum	# Missing
%, Total	35,973	10,844	1,565	48	18,267	58,739	0
%, C	32,822	10,550	2,302	21	18,267	56,888	0
%, SC	40,873	10,013	2,585	15	24,686	58,739	0

Results for totals may not agree w with results for individual cells because of missing values for split variables.

Unpaired t-test for %  
Grouping Variable: TIPO  
Hypothesized Difference = 0

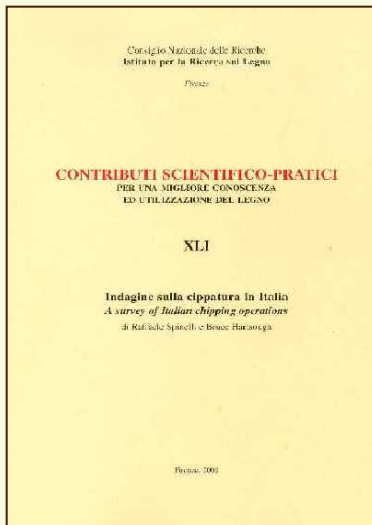
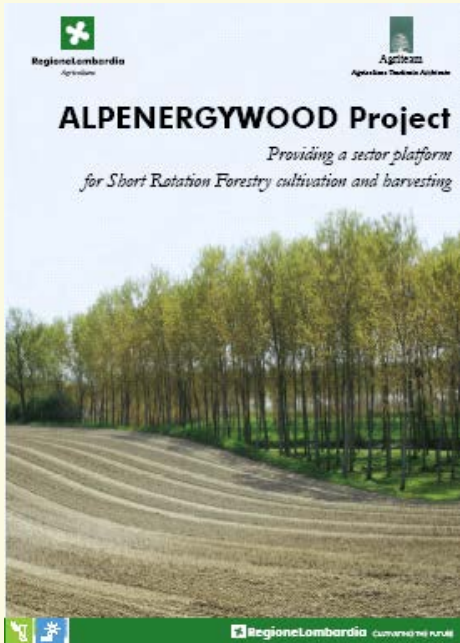
	Mean Diff.	DF	t-Value	P-Value
C, SC	-8,051	34	-2,305	,0274

# Small scale operators

- Miniyarders
- Miniprocessors



# [www.biomassaforestale.org](http://www.biomassaforestale.org)



Contact: [spinelli@ivalsa.cnr.it](mailto:spinelli@ivalsa.cnr.it)